

EXCLUSIVE LISTING



ODOM & ECHEVERRIA DAIRY

Location: 19312 S. Tuthill Road Buckeye, AZ 85326
Tuthill Road and Germann Road- Maricopa County

Price: \$18,000,000

Size: +/-451.6 gross acres
+/-294.6 farmable acres
+/-157 acres (dairy and house)

Dairies: 6,000 head milking capacity
4,600 head young stock/ heifers
2 Calf Barns

Barns: 2 Milk Barns -Each Double 40 Parallel

Office: 2,585 sf

Water/Water Rights:

4 dairy/irrigation wells
2 domestic wells
General Industrial Use Permit
Type I Grandfathered Rights
Irrigation Grandfathered Rights

House: +/-3,224 sf



COPPER STAR
Real Estate

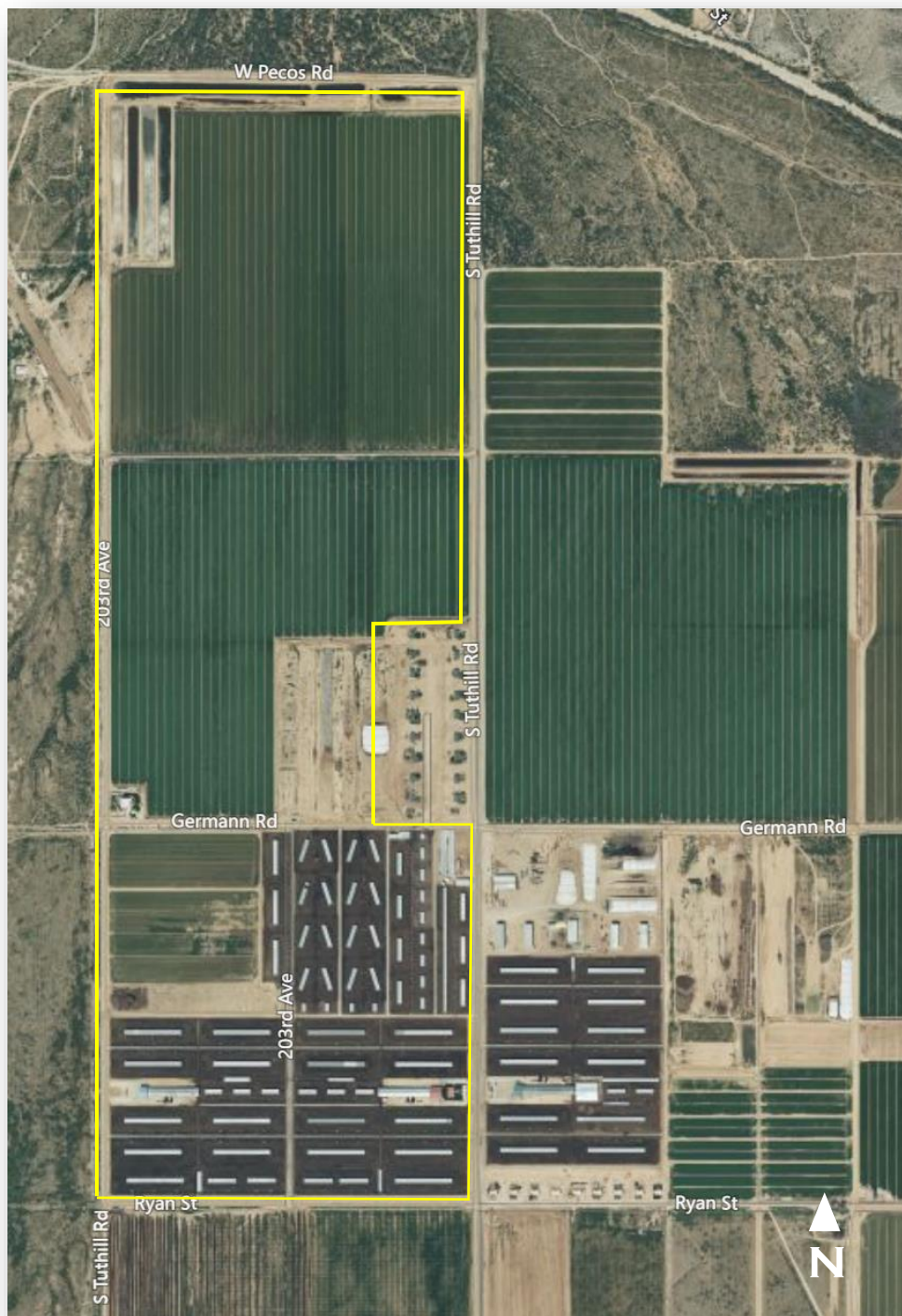
BRAD KUIPER
(602) 390-0624
BRAD@COPPERSTARRE.COM

104 W. BASELINE RD.
BUCKEYE, AZ 85326

WWW.COPPERSTARRE.COM

Comments: Unique opportunity to acquire a well located large efficient dairy operation. Property is currently leased, providing a nice return on investment. Property also has very desirable water rights providing ample water to dairy/farm operation and are extremely valuable for future development opportunities. Dairy is located in a great area for feed and forage. Owner is also able to supply dairies with feed.

ODOM & ECHEVERRIA DAIRY | RAINBOW VALLEY



COPPER STAR
Real Estate

BRAD KUIPER
(602) 390-0624
BRAD@COPPERSTARRE.COM

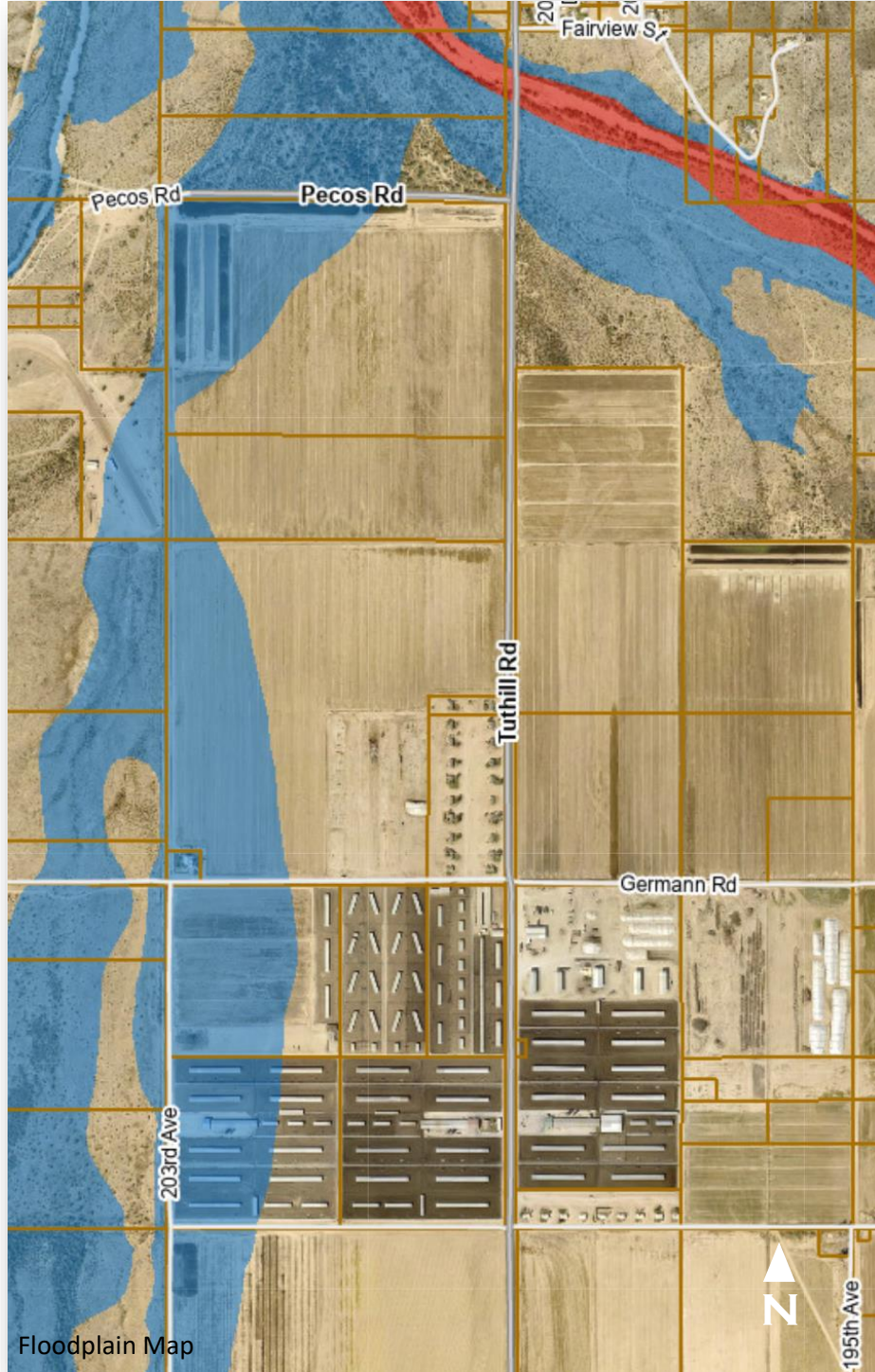
ODOM & ECHEVERRIA DAIRY | RAINBOW VALLEY



COPPER STAR
Real Estate

BRAD KUIPER
(602) 390-0624
BRAD@COPPERSTARRE.COM

ODOM & ECHEVERRIA DAIRY | RAINBOW VALLEY



COPPER STAR
Real Estate

BRAD KUIPER
(602) 390-0624
BRAD@COPPERSTARRE.COM