

EXCLUSIVE LISTING



KERR FAMILY DAIRY

Location: SEC Hazen Road and Wilson Ave, Maricopa County

Size: +/- 121.21 acres (capable of milking +/-1,200 cows)

- Dairy sits on +/-38 acres
- +/-82 acres of farm ground surrounds the dairy

Price: \$7,000,000

Barn: Double 20 Parallel (Boumatic)

Corrals: Lockups and cooling in all milk cow corrals

Calf Barn: +/- 132 head calf barn

Water: 2 wells with a general industrial permit

Irrigation: Buckeye Water Conservation and Drainage District

Comments: Efficient dairy well located in an abundant feed area.

Owner looking to sell entire milk herd, replacement heifers, young stock, United Dairymen of Arizona milk base, and feed separately.



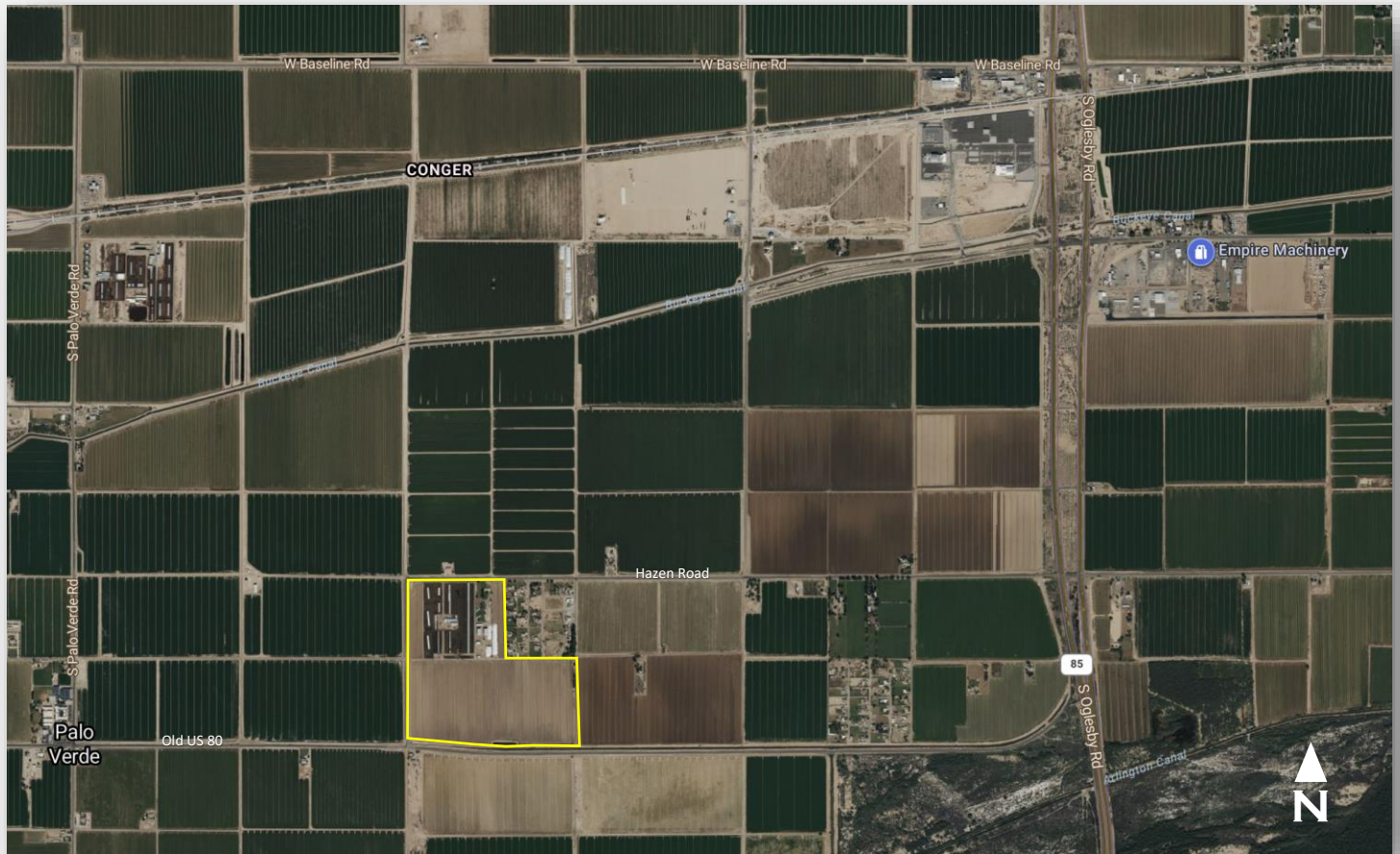
COPPER STAR
Real Estate

BRAD KUIPER
(602) 390-0624
BRAD@COPPERSTARRE.COM

104 W. BASELINE RD.
BUCKEYE, AZ 85326

WWW.COPPERSTARRE.COM

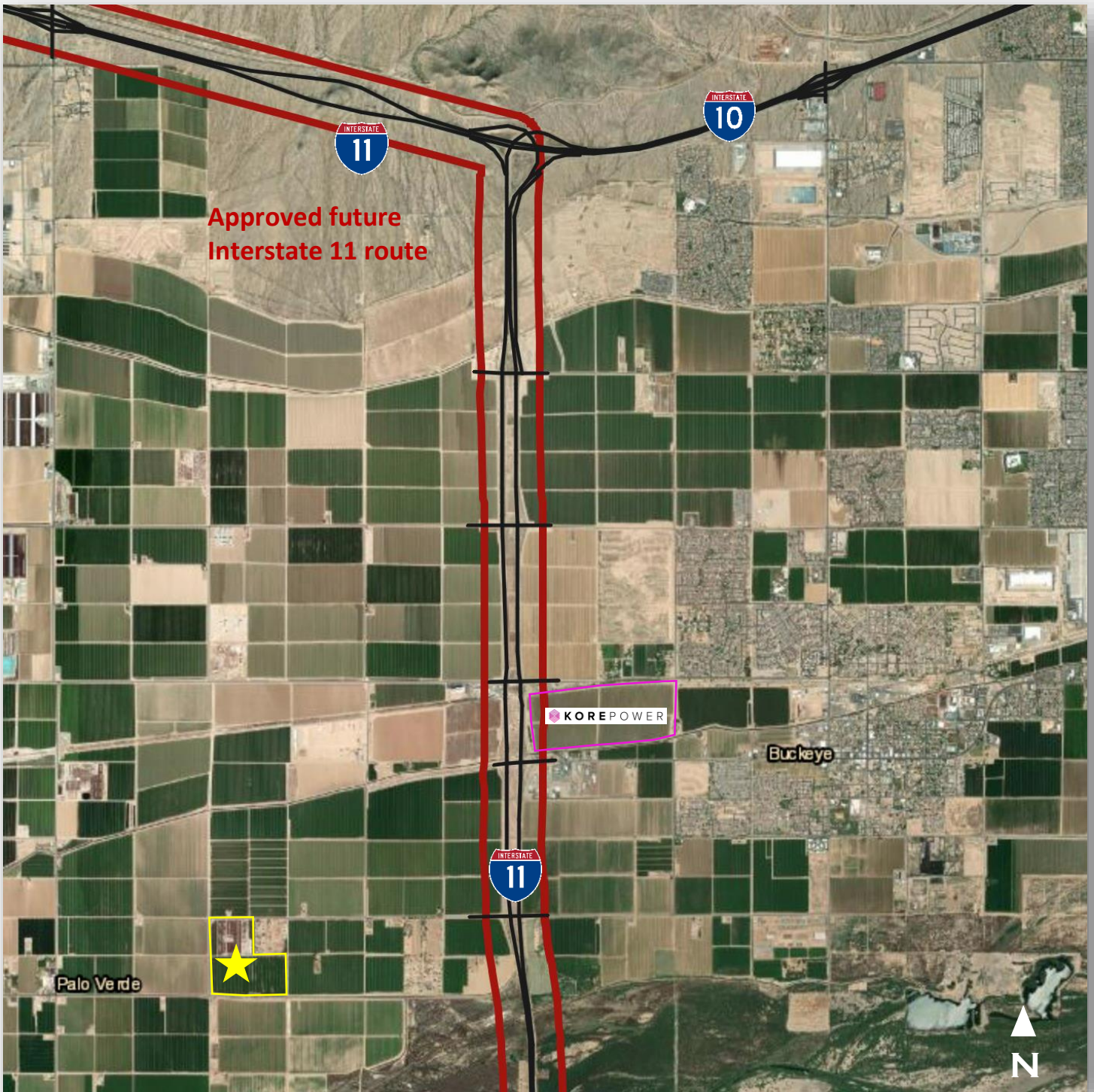
KERR FAMILY DAIRY | BUCKEYE, AZ



COPPER STAR
Real Estate

BRAD KUIPER
(602) 390-0624
BRAD@COPPERSTARRE.COM

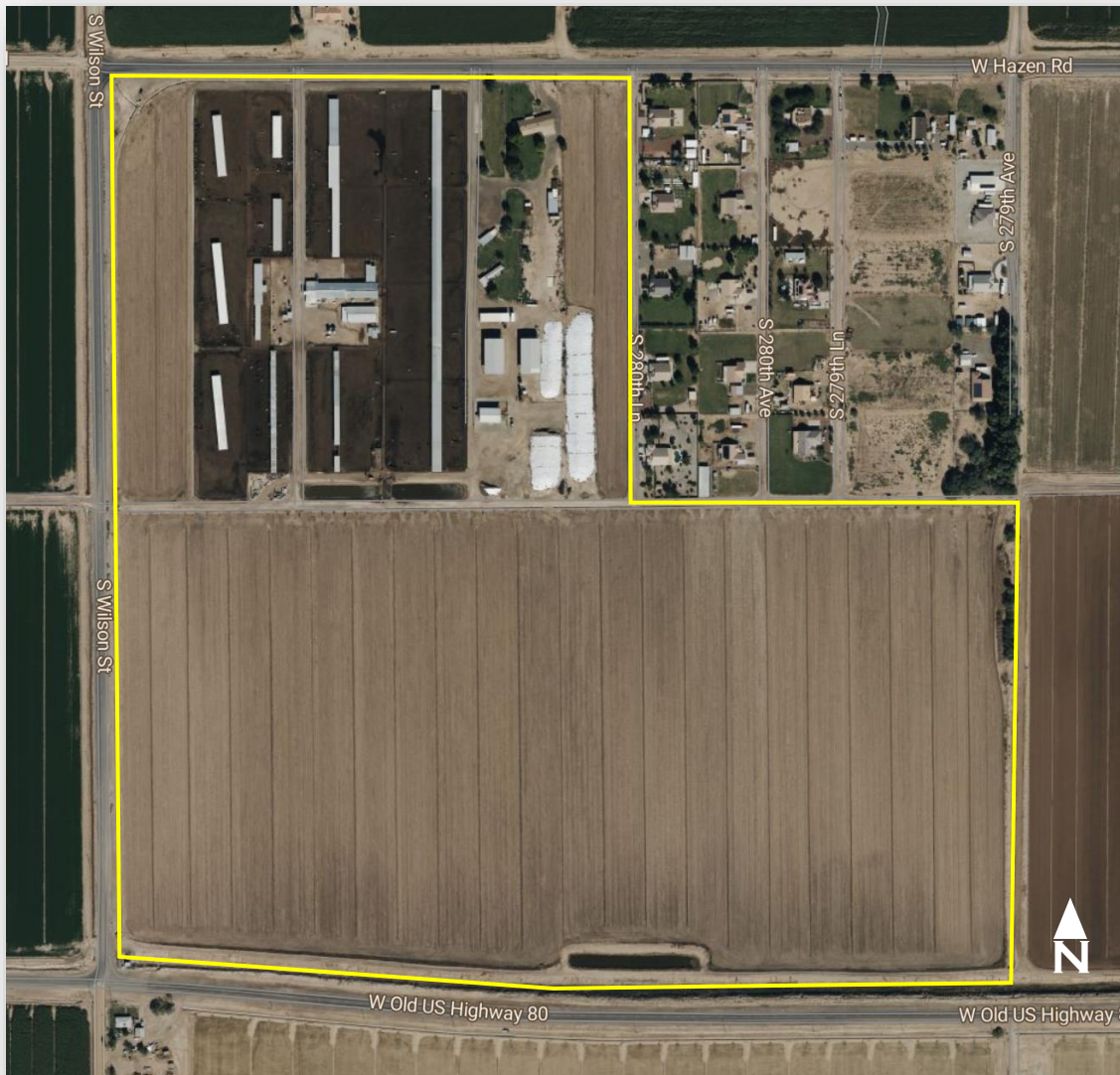
KERR FAMILY DAIRY | BUCKEYE, AZ



COPPER STAR
Real Estate

BRAD KUIPER
(602) 390-0624
BRAD@COPPERSTARRE.COM

KERR FAMILY DAIRY | BUCKEYE, AZ

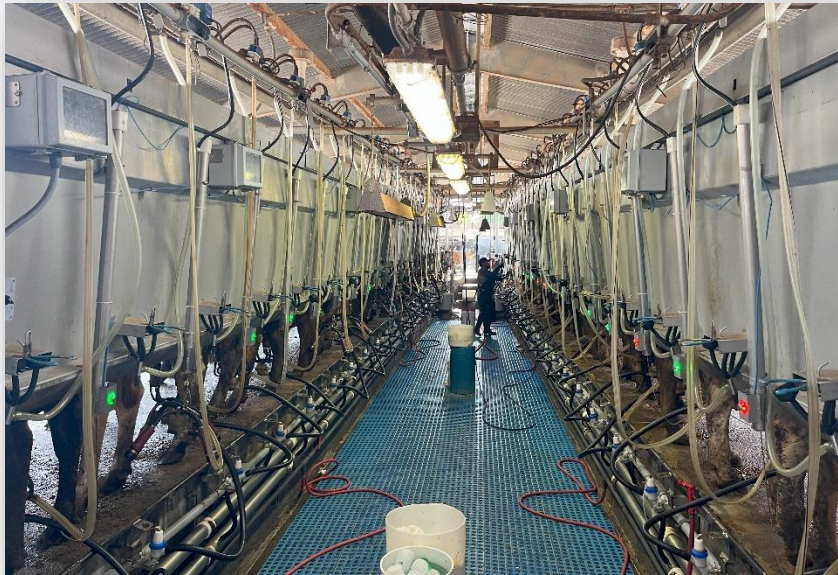


COPPER STAR
Real Estate

BRAD KUIPER
(602) 390-0624
BRAD@COPPERSTARRE.COM

104 W. BASELINE RD. | BUCKEYE, AZ 85326 // WWW.COPPERSTARRE.COM

KERR FAMILY DAIRY | BUCKEYE, AZ



COPPER STAR
Real Estate

BRAD KUIPER
(602) 390-0624
BRAD@COPPERSTARRE.COM