

EXCLUSIVE LISTING



RC DAIRY

- Location:** 6240 W Kleck Rd, Casa Grande, AZ 85194
NEC Kleck Rd and Toltec Buttes Rd (Pinal County)
- Price:** Submit
- Size:** +/- 159.00 acres (net dairy property, irrigated field, and double-wide residence)
- Corrals:** +/- 1,450 stanchions
- Utilities:**
- Power – Electrical District 2
 - Water
 - Hohokam Irrigation & Drainage District
 - General Industrial Use Application No. 59-575451.0000, 310 acre-feet per annum
 - Grandfathered irrigation rights for 39 acres
 - Gas – Near El Paso Natural Gas Co 2000 series branch line
- Parcels:** 401-06-0040, 401-06-005A, and 401-06-005B
- Zoning:** General Rural (GR) via Pinal County

Comments: Located just 3 miles east of I-10 in one of Arizona's fastest-growing regions, Pinal County, this former dairy property includes a ±37-acre irrigated field and corrals, both currently leased for farming and cattle storage, providing immediate income potential. The property is well-suited for continued agricultural use or exploring other development opportunities! Please do not hesitate to call with any questions!



COPPER STAR
Real Estate

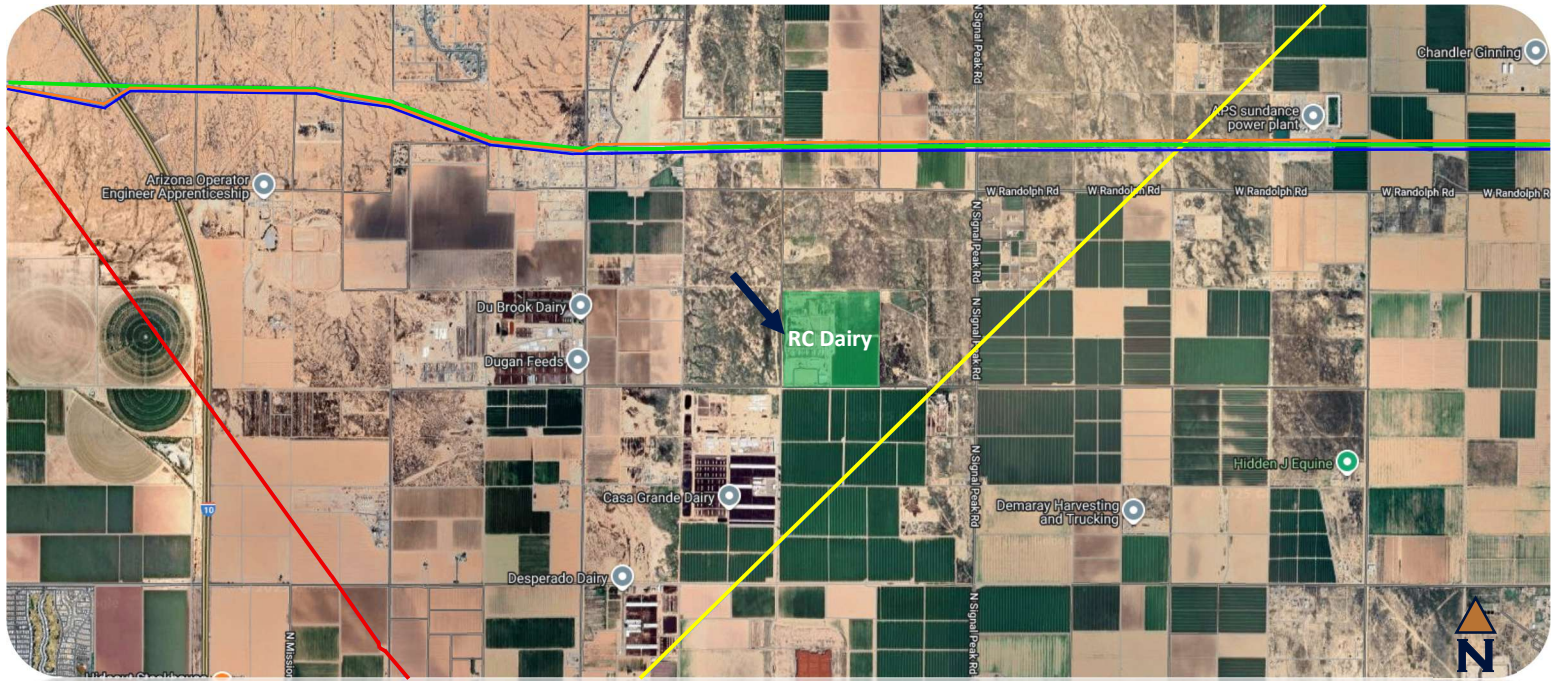
TYLER DUGAN
(602) 708-4837
TYLER@COPPERSTARRE.COM

BRAD KUIPER
(602) 390-0624
BRAD@COPPERSTARRE.COM

104 W. BASELINE RD.
BUCKEYE, AZ 85326

WWW.COPPERSTARRE.COM

RC DAIRY | PINAL COUNTY



Attribute	Value
Category: PIPELINE ATTRIBUTES	
OPERATOR ID	4280
OPERATOR NAME	EL PASO NATURAL GAS CO
SYSTEM NAME	1600 SERIES CALIFORNIA HIGH PRESSURE SY*
SUBSYSTEM NAME	01600-LINE FROM E.P.N.G.-WAHA PLANT TO *
PIPELINE ID	01600
MILES	78.76
COMMODITY CATEGORY	Natural Gas
COMMODITY DESCRIPTION	NATURAL GAS
INTERSTATE DESIGNATION	Y
PIPELINE STATUS CODE	Active (filled)
REVISION DATE	03/31/2025

Attribute	Value
Category: PIPELINE ATTRIBUTES	
OPERATOR ID	4280
OPERATOR NAME	EL PASO NATURAL GAS CO
SYSTEM NAME	2000 SERIES EL PASO SYSTEM BRANCH LINE
SUBSYSTEM NAME	02000-MCCAMEY TO EHRENBURG LINE
PIPELINE ID	02000
MILES	63.31
COMMODITY CATEGORY	Natural Gas
COMMODITY DESCRIPTION	NATURAL GAS
INTERSTATE DESIGNATION	Y
PIPELINE STATUS CODE	Active (filled)
REVISION DATE	03/31/2025

Attribute	Value
Category: PIPELINE ATTRIBUTES	
OPERATOR ID	4280
OPERATOR NAME	EL PASO NATURAL GAS CO
SYSTEM NAME	2000 SERIES EL PASO SYSTEM BRANCH LINE
SUBSYSTEM NAME	02026-LINE FROM TUCSON-PHOENIX LINE TO *
PIPELINE ID	02026
MILES	9.06
COMMODITY CATEGORY	Natural Gas
COMMODITY DESCRIPTION	NATURAL GAS
INTERSTATE DESIGNATION	Y
PIPELINE STATUS CODE	Active (filled)
REVISION DATE	03/31/2025

Attribute	Value
Category: PIPELINE ATTRIBUTES	
OPERATOR ID	4280
OPERATOR NAME	EL PASO NATURAL GAS CO
SYSTEM NAME	1000 SERIES EL PASO SYSTEM MAIN LINE
SUBSYSTEM NAME	01007-LINE FROM EL PASO-DOUGLAS LINE TO *
PIPELINE ID	01007
MILES	27.47
COMMODITY CATEGORY	Natural Gas
COMMODITY DESCRIPTION	NATURAL GAS
INTERSTATE DESIGNATION	Y
PIPELINE STATUS CODE	Active (filled)
REVISION DATE	03/31/2025

Attribute	Value
Category: PIPELINE ATTRIBUTES	
OPERATOR ID	19610
OPERATOR NAME	TRANSWESTERN PIPELINE COMPANY LLC
SYSTEM NAME	NEW RIVER COMP STATION DISCHARGE GROUP
SUBSYSTEM NAME	AZBM121A2 - 36 PHOENIX LATERAL MP 180-2
PIPELINE ID	31494A7B800B5A80DAD0
MILES	42.57
COMMODITY CATEGORY	Natural Gas
COMMODITY DESCRIPTION	NATURAL GAS
INTERSTATE DESIGNATION	Y
PIPELINE STATUS CODE	Active (filled)
REVISION DATE	03/07/2024



COPPER STAR
Real Estate

TYLER DUGAN
(602) 708-4837
TYLER@COPPERSTARRE.COM

BRAD KUIPER
(602) 390-0624
BRAD@COPPERSTARRE.COM

Arizona utilities sign up for gas pipeline project, spurred by data center development

Arizona Public Service has 4.5 GW of committed large load in its interconnection queue and 20 GW of other potential large customers, Pinnacle West CEO Ted Geisler said Wednesday.

Published Aug. 7, 2025



Ethan Howland
Senior Reporter

in f X P M



South of Ozone, Texas, construction of 42-inch mainline pipeline will move natural gas from West Texas to the Corpus Christi area. Arizona Public Service Co. and other utilities said on Aug. 6, 2025, they plan to buy capacity on Transwestern Pipeline's Desert Southwest expansion project, which aims to deliver natural gas from Texas to Arizona. *milehightraveler via Getty Images*

Arizona Public Service Co. and Salt River Project will buy capacity on Transwestern Pipeline's just-announced Desert Southwest expansion project, which aims to deliver natural gas from the Permian Basin in Texas to Arizona, the utilities said Wednesday.

APS, the project's anchor customer, will use gas from the pipeline for gas-fired power plants that will support planned data centers in the utility's service territory, said Ted Geisler, chairman, president and CEO of Pinnacle West Capital Corp., APS' parent company, during a Wednesday earnings call.

Source: <https://www.utilitydive.com/news/arizona-utilities-aps-srp-transwestern-gas-pipeline-data-center/757040/>



COPPER STAR
Real Estate

TYLER DUGAN
(602) 708-4837
TYLER@COPPERSTARRE.COM

BRAD KUIPER
(602) 390-0624
BRAD@COPPERSTARRE.COM

20 Jun 2025

SoftBank plans \$1 trillion AI and robotics park in Arizona

Project Crystal Land could be SoftBank's most ambitious venture, with AI-driven robotics and automation production backed by Vision Fund startups and global tech partners.



SoftBank founder Masayoshi Son [is planning](#) what could become his most audacious venture yet: a \$1 trillion AI and robotics industrial park in Arizona.

Dubbed 'Project Crystal Land', the initiative aims to recreate a high-tech manufacturing hub reminiscent of China's Shenzhen, focused on AI-powered robots and next-gen automation.

Son is courting global tech giants — including Taiwan Semiconductor Manufacturing Co. (TSMC) and Samsung — to join the vision, though none have formally committed.

The plan hinges on support from federal and state governments, with SoftBank already discussing possible tax breaks with [US](#) officials, including Commerce Secretary Howard Lutnick.

While [TSMC](#) is already investing \$165 billion in Arizona facilities, sources suggest Son's project has not altered the chipmaker's current roadmap. SoftBank hopes to attract semiconductor and AI hardware leaders to power the park's infrastructure.

Son has also approached [SoftBank](#) Vision Fund portfolio companies to participate, including robotics startup Agile Robots.

The park may serve as a production hub for emerging tech firms, complementing SoftBank's broader investments, such as a potential \$30 billion stake in OpenAI, a \$6.5 billion acquisition of Ampere Computing, and funding for [Stargate](#), a global data centre venture with OpenAI, Oracle, and MGX.

While the vision is still early, Project Crystal Land could radically shift US high-tech manufacturing. Son's strategy relies heavily on project-based financing, allowing extensive infrastructure builds with minimal upfront capital.

Source: <https://dig.watch/updates/softbank-plans-1-trillion-ai-and-robotics-park-in-arizona>



COPPER STAR
Real Estate

TYLER DUGAN
(602) 708-4837
TYLER@COPPERSTARRE.COM

BRAD KUIPER
(602) 390-0624
BRAD@COPPERSTARRE.COM

RC DAIRY | PINAL COUNTY



COPPER STAR
Real Estate

TYLER DUGAN
(602) 708-4837
TYLER@COPPERSTARRE.COM

BRAD KUIPER
(602) 390-0624
BRAD@COPPERSTARRE.COM

RC DAIRY | PINAL COUNTY



COPPER STAR
Real Estate

TYLER DUGAN
(602) 708-4837
TYLER@COPPERSTARRE.COM

BRAD KUIPER
(602) 390-0624
BRAD@COPPERSTARRE.COM